



**Lighter
Stronger
Better!**

A: 29 Snook St Clontarf QLD 4019
A: PO Box 122 Margate QLD 4019
P: 07 3897 5700
F: 07 3811 6480
E: info@ecb.com.au
W: ecb.com.au
W: customalloy.com.au



REPLACES: 10.01.19
REVISED: 20.05.21

EAT255SY

FITTING INSTRUCTIONS

TOYOTA LANDCRUISER 200 SERIES 1/16 ON ECB BIG TUBE™ PROTECTION BAR WITH BUMPER LIGHTS VEHICLE FRONTAL PROTECTION SYSTEM (VFPS) FOR AIR BAG & ADR COMPLIANT VEHICLES

Check installation hardware before commencing.
Special tools: T30 Torx bit with suitable driver.

1. Check size of templates as size may vary according to printer. Using a sharp pair of scissors, accurately cut templates (supplied) from fitting instructions. Mask vehicle from bumper attachment point around bumper so bumper skin is not marked. Hold templates onto vehicle and mark cut line onto bumper skin. Across centre of bumper, cut between the top of the fog light openings and follow the bumper line. **See figure 1.**
2. Lift bonnet.
3. Remove grille and headlamp cover, seven plastic push pull clips.
4. Remove chrome infills on headlights by pulling infills forward to remove. **See figure 2.**
5. Disconnect wiring harness from camera and radar unit. Remove three bolts from top of grille, apply pressure on lower grille clips whilst pulling forward on grille to remove.
6. Remove plastic splash guards from around tow points; four 10mm head bolts and one plastic 12mm head nut (per side).
7. Remove bumper assembly. Six 10mm head bolts from underside centre of bumper, three T30 Torx head screws from front of wheel arch (per side), and three push pull clips from behind grille. Pull bumper sides outward to release plastic clips from guard edges and plastic bolt clips on inner guard, pull forward and remove bumper.
8. Remove polypropylene infill and aluminium bumper support, three 17mm nuts per side accessed from holes in front of support. Remove four 14mm head bolts (per side) from crash cans. Remove crash cans.
9. Remove tow hooks. Two 17mm bolts (per side).
10. Trim plastic radiator surrounds to allow fitment of ECB steel mounting bracket. **See figures 3 and 4.**
11. Slide ECB steel mounting bracket (supplied) onto front of chassis rails. Attach using eight M10 nuts, spring washers and flat washers (supplied). **Finger tighten only. See figure 5.**
12. Using two M12 x 55 bolts, spring washers and flat washers per side (supplied), refit original tow hooks, through ECB steel mounting bracket to vehicle. **Tighten all bolts. See figure 6.**
13. Disconnect indicator and parking lights on vehicle. Install ECB quick click wiring harnesses (supplied) between disconnected harness and indicator / park lights on vehicle. Run wiring out from under lights ensuring clearance from sharp edges and moving parts.
14. Remove the parking sensors from plastic bumper using a small flat blade screwdriver to gently pry open the 4 tabs holding the sensor to the mount and unplug from wiring harness. **Figure 7.**



**Lighter
Stronger
Better!**

A: 29 Snook St Clontarf QLD 4019
A: PO Box 122 Margate QLD 4019
P: 07 3897 5700
F: 07 3811 6480
E: info@ecb.com.au
W: ecb.com.au
W: customalloy.com.au



15. Remove the parking sensor mounts by prying the legs of the mount open and putting slight pressure to pull the front and rear of the mount apart. **Figure 8.**
16. Remove the wiring loom from the bumper and fit into the protection bar. **See Figure 9.**
17. Install plastic sensor mounts into the holes at the front of the protection bar. **Ensure the large openings on the front and rear part of the sensor mount line up.** Fit parking sensor into the mounts now situated in the protection bar. Should Bumper not have parking sensors, install plastic plugs provided into bullbar holes.
18. Using a jigsaw or similar, cut bumper along marked lines. Attach 3mm clip lock trim to cut line of bumper. Trim clip lock ends to suit end of plastic bumper. **See figure 10.**
19. Zip tie washer line to underside of bumper stiffener with ties supplied. **See figure 11.**
20. Refit bumper cover to vehicle. Connect headlight washers (if fitted).
21. Attach 6mm clip lock trim (supplied) to top centre of ECB protection bar. **See figures 12 & 13.**
22. Fit bumper lights and the indicator/ DRL/ park lights to the protection bar ensuring they are the correct way up. **See figure 14 and 15.**
23. Attach protection bar to outside of steel mounting brackets using three M12 x 40 bolts (supplied), washers, spring washers and nuts (per side).
24. Align protection bar with approximately 12mm clearance off bumper. **See figures 16 and 17. Tighten all bolts.**
25. Connect ECB indicator/ DRL/ park light. Ensure wiring is routed in such a manner to avoid any sharp edges etc.
26. Connect and check operation of ECB indicator/ DRL/ park lights, ECB bumper lights and parking sensors. **IMPORTANT: Check the sensors capability by turning the car on and selecting drive. If the sensors are triggered with nothing in front of the vehicle, enlarge the sensor holes in the bar slightly. Caution: If sensor holes are enlarged too much the sensor won't be secured properly in the bar.**
27. Using M6 x 20 bolts, flat washers and nyloc nuts (supplied), attach 3mm alloy under bodyguard to top of end skirt and underside of lower leg of channel. **Tighten all bolts. See figure 18.**
28. Pushing inner guard into position in wheel arch, secure plastic guard liner to under bodyguard with self-drilling screws supplied. **See figure 18 and 19.**
29. On passengers side only: using under bodyguard as a guide and pushing inner guard up into wheel arch opening, drill a 6 mm hole at front of suspension arm. **NOTE: Bolt must be placed in hole from rear of vehicle. Nut must be on top to prevent from rubbing on suspension parts. See figure 20.**
30. Trim inner guards using a sharp knife or scissors or similar. **See figure 21 and 22.**
31. Fit centre bash plate to underside of protection bar, using six M6 x 20 bolts, flat washers and nyloc nuts (supplied). **See figure 23.**

ENSURE NUMBER PLATE IS CLEARLY VISIBLE

Note: When fitting/refitting the licence plate to the vehicle, ensure there is no obstruction to licence plate vision in accordance with local authorities. If required relocate licence plate to an alternate location.

Further VFPS Notes:

- Do not attach VFPS to the vehicle using anchorages not intended for this purpose (e.g. engine mounting bolts).
- Do not use this product for any vehicle make or model, other than those specified by the VFPS manufacturer.
- Do not remove the plaque or label from the VFPS.
- Do not modify the structure of the VFPS in any way.
- No accessory or fitment should project forward of the VFPS forward profile.
- ENSURE THESE INSTRUCTIONS ARE LEFT WITH VEHICLE OWNER AND/OR OPERATOR.**

IMPORTANT INFORMATION

Periodically check bolts and nuts for correct tightness, especially if travelling on rough roads

FITTING KIT

1 – ECB Steel mounting bracket	2 – M6 spring washers
1 – ECB under bodyguard	11 – M6 nyloc nuts
1 – Pair ECB side under bodyguards	2 – M6 nuts
4 – M12 x 1.25 x 55 bolts	1 – ECB LED Indicator / Park light/ DRL (ICLED105ECB)
6 – M12 x 1.25 x 40 bolts	1 – ECB Quick Click Kit (IC15TOLCIPDH)
16 – M12 flat washers	1 – ECB bumper lights
10 – M12 spring washers	1 – Quick click bumper kit (IC10D40S1004ECBH)
6 – M12 x 1.25 nuts	2 – Bumper light surrounds
8 – M10 flat washers	2 – 27mm black plastic plugs
8 – M10 spring washers	1 – 2100mm length, 6mm clip lock trim
8 – M10 x 1.25 nuts	2 – 550mm lengths, 3mm clip lock trim
15 – M6 x 20 bolts	10 – 300mm zip ties
24 – M6 flat washers	



Figure 1: Approximate cut line on vehicle.



Figure 2: Chrome infill to remove.



Figure 3: Approximate trim on drivers side shroud.



Figure 4: Approximate trim on passengers side shroud.

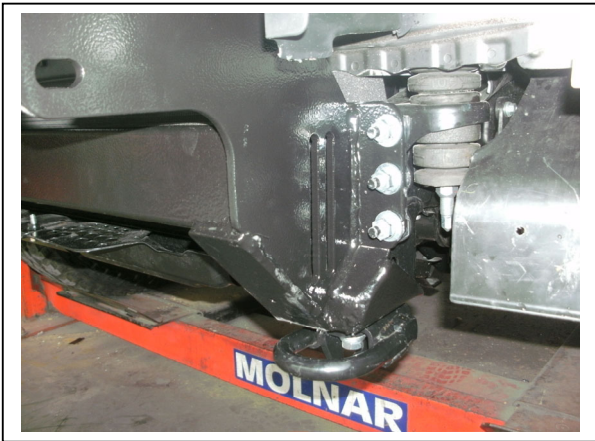


Figure 5: Three bolts to crash can assembly.

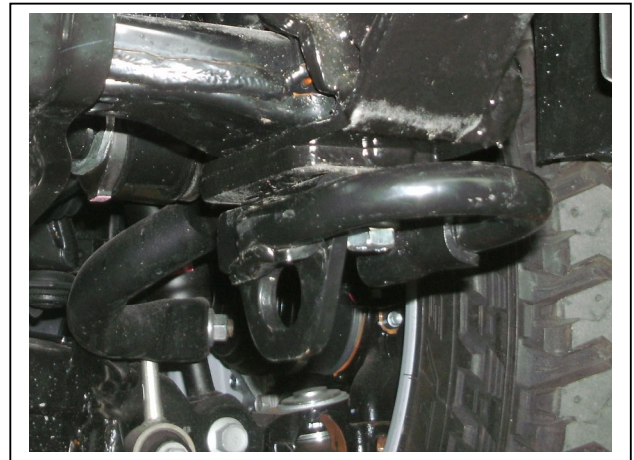


Figure 6: Bolts through tow hook assemblies.



Figure 7: Remove parking sensor.

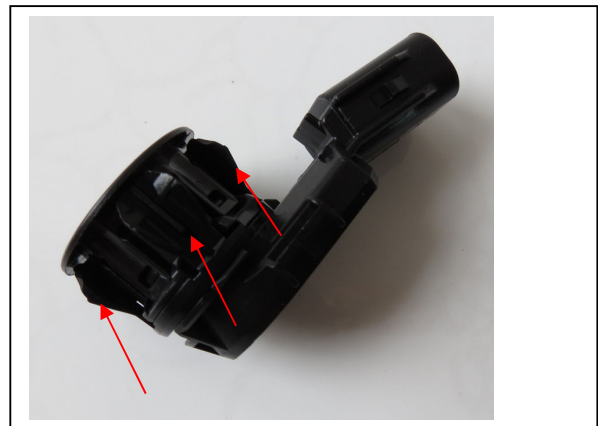


Figure 8: Remove parking sensor mounts.

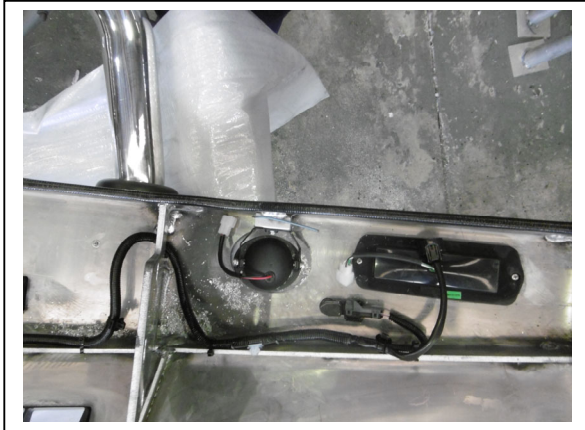


Figure 9: Fit wiring harness.



Figure 10 : 3mm clip lock, trimmed to suit rear of cut.

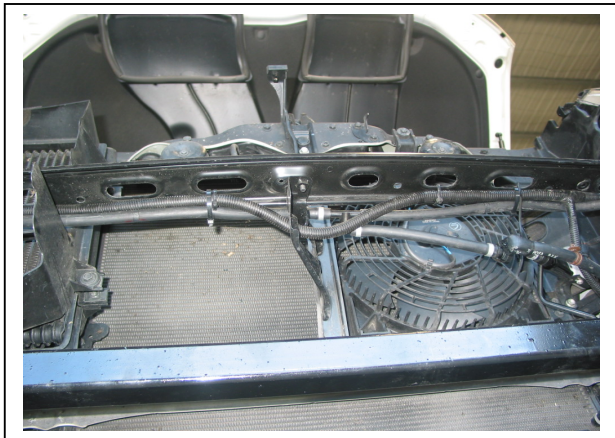


Figure 11: Headlight washer loom attachment under bumper stiffener.

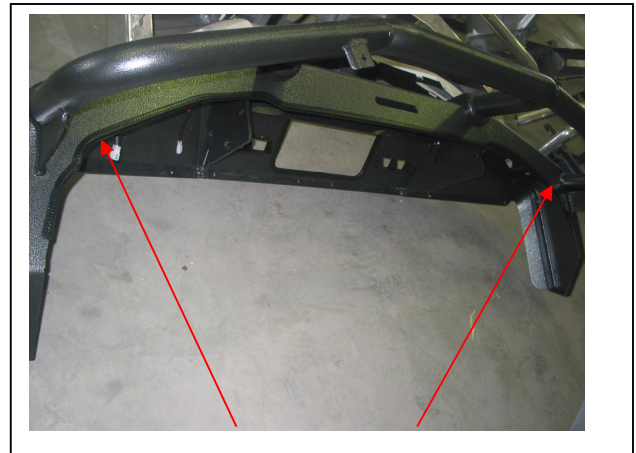
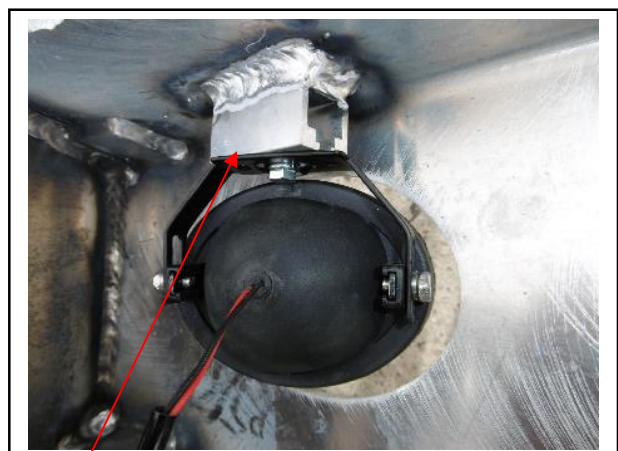


Figure 12: 6mm clip lock trim top view.



Figure 13. 6mm clip lock trim end trim.



M6 bolt.

Figure 14.



Figure 15. Indicator/DRL/Park Light.



Figure 16: Protection bar side view.



Figure 17: Protection bar front view.



Figure 18: Drivers side guard liner trim line.



Figure 19: Passenger side guard liner trim line.



Figure 20: Passenger side suspension guard.



Figure 21: Passenger side guard trimmed.



Figure 22: Drivers side guard trimmed.

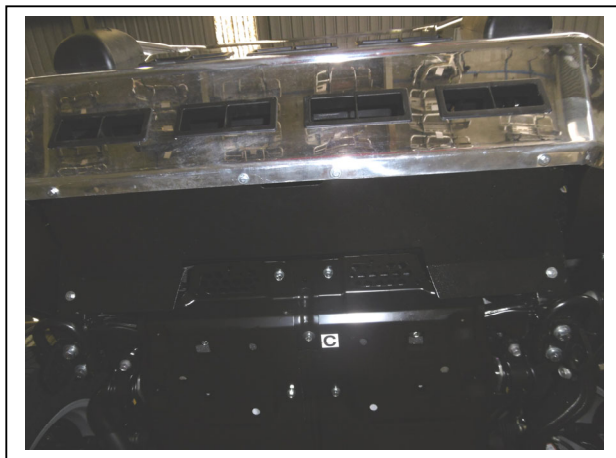


Figure 23: Underbody guard fitted.

Thank you for purchasing an ECB Product

Please ensure that you read the below and complete the warranty registration.

Vehicle Owner / Operator Responsibilities and Product Care **Important Information**

It is the responsibility of the vehicle owner and operator to ensure all nuts and bolts are checked periodically, especially when travelling on corrugated roads. Please ensure these are tightened as per the steps in the provided fitting instructions.

While ECB products are manufactured from high tensile alloy the vehicle owner / operator must check any steel mounting brackets or steel auxiliary parts for signs of corrosion. If you find any corrosion, please contact ECB Pty Ltd to discuss an appropriate solution – 1800 069 145 or www.ecb.com.au.

Product Care

Polished Products

Being a premium mirror polished finish, regular maintenance will be required to keep that iconic ECB shine. We recommend using our own brand of Aluminium Polish. This formula has been tried and tested and in our opinion is the world's best standard.

Directions: Apply a small quantity of Aluminium Polish to a clean soft cloth and rub the metal surface. The longer the rubbing the brighter the surface becomes. Wipe off Aluminium Polish with clean soft cloth. Also suitable for motorised buffing machines. Note: There are more specific details on the polish bottle. Please read before use.

Powder Coated Products

Our powder coated finishes are very low maintenance. In fact, there is actually very little you will ever need to do for this product. Just clean it as you would your car and it will stay looking good as new.

ECB Aluminium Polish

When you're looking for that showroom finish look for your polished automotive products, you can depend on the no compromise quality of East Coast Bullbars Aluminium Polish. This specifically designed product is the best polish available and we guarantee that this \$#!+ works. Within our decades of manufacturing polished alloy products, we have trialled a large range of different polishes on the market and believe without a doubt that nothing beats the finish quality of East Coast Bullbars Aluminium Polish.

East Coast Bullbars Aluminium Polish is excellent for use by hand and is ideal for polished bullbars, nudge bar and stainless-steel products. This polish will clean, polish and protect your product from the elements whilst bringing your products back to that showroom finish look.





**Lighter
Stronger
Better!**

A: 29 Snook St Clontarf QLD 4019
 A: PO Box 122 Margate QLD 4019
 P: 07 3897 5700
 F: 07 3811 6480
 E: info@ecb.com.au
 W: ecb.com.au
 W: customalloy.com.au



Warranty Registration

Please Register your purchase online www.ecb.com.au/warranty-registration

If you have any questions, please contact our national office on 1800 069 145 or www.ecb.com.au

Or post the below information back to ECB, PO Box 122, Margate, QLD 4019.

Contact Details

Name:	
Address:	
Email:	
Phone:	

Purchase Details

Purchased from:	
Date of Purchase:	

Product Details

(You can find this information on the silver label of your ECB Product)

Part Number:	
Work Order Number:	

By submitting this registration, you automatically subscribe to ECB's mail outs. You can unsubscribe at any time.



**Lighter
Stronger
Better!**

A: 29 Snook St Clontarf QLD 4019
 A: PO Box 122 Margate QLD 4019
 P: 07 3897 5700
 F: 07 3811 6480
 E: info@ecb.com.au
 W: ecb.com.au
 W: customalloy.com.au



We value your comments

Dear Fitter,

ECB would like to know how you went with the installation of this product. We value your comment and may need to contact you to clarify some details so please complete your contact details clearly.

We would appreciate if you could complete as many of the following details as possible.

Your Name:	Your contact No.
Product Part No.	Product Invoice No.
Product Description:	Make, model, and year of vehicle:
Product Work Order No.	Company your from/Company product purchased from:

Date of Fitment: ___/___/___

Was the fitting hardware supplied complete? Yes No

If no what was not supplied

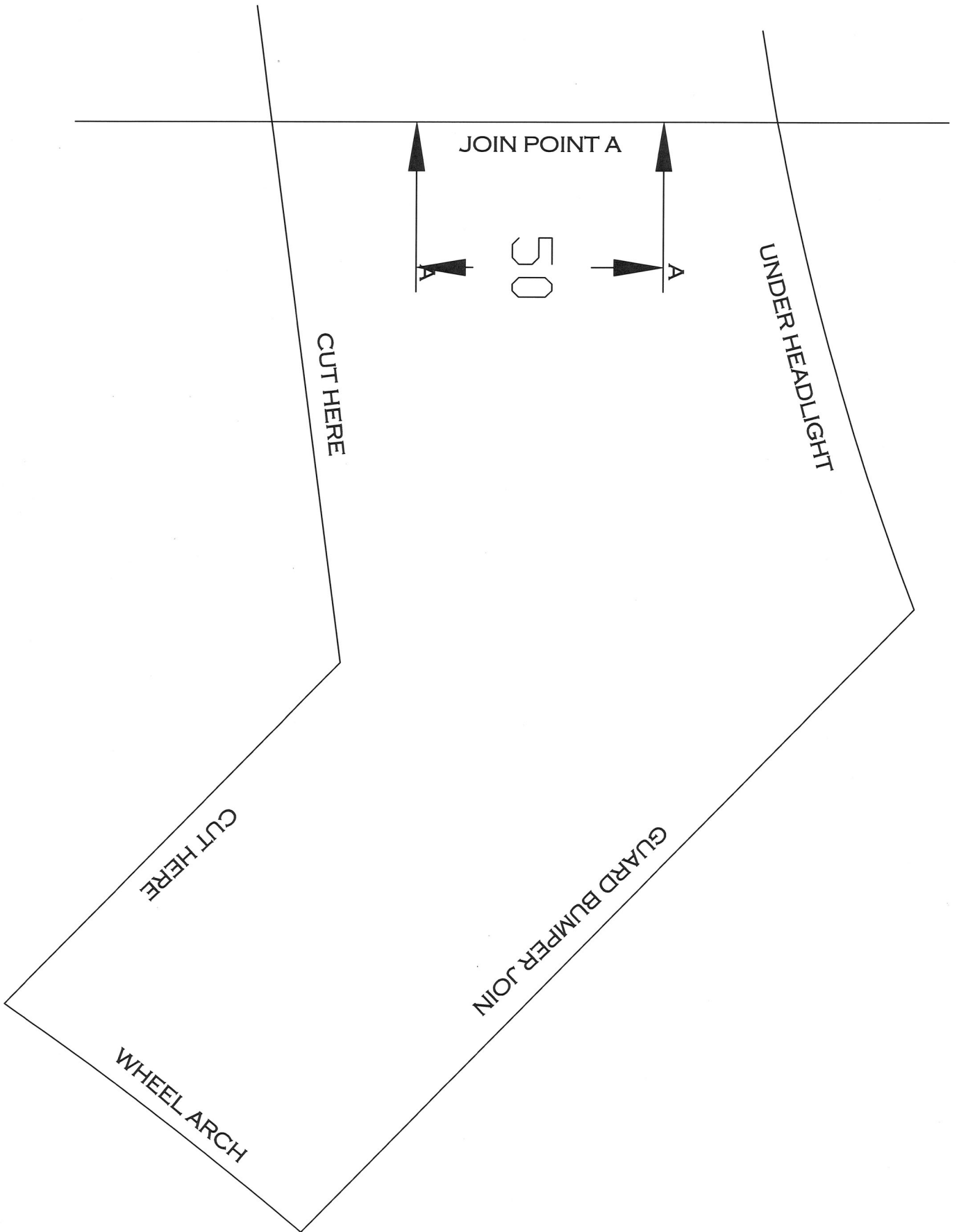
Did the installation go well? Yes No

Please provide comments

Please draw diagrams if you need to.

Post to
 Reply Paid 122
 PO Box 122
 Margate QLD 4019

Email to:
 info@ecb.com.au

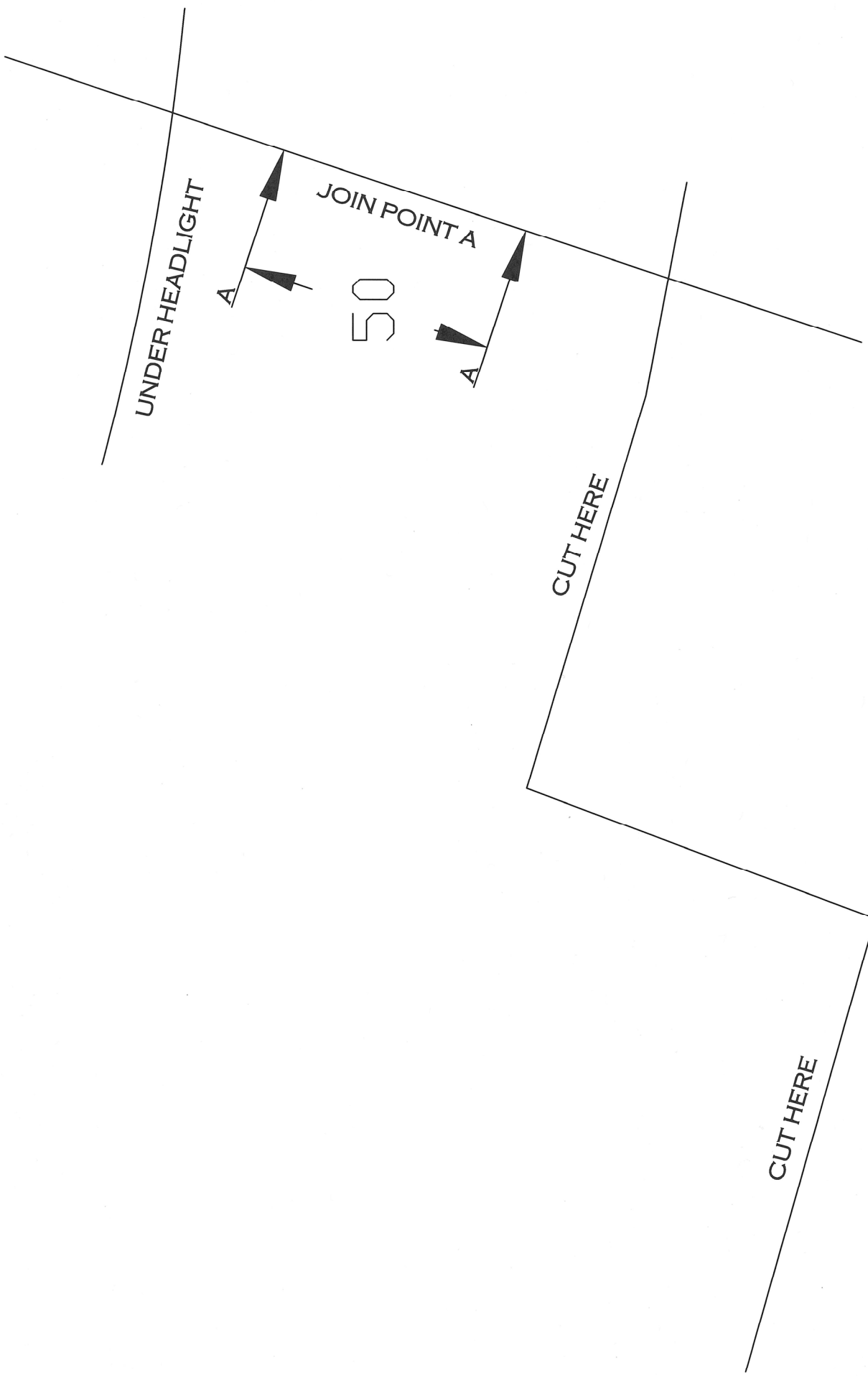




**Lighter
Stronger
Better!**

A: 29 Snook St Clontarf QLD 4019
A: PO Box 122 Margate QLD 4019
P: 07 3897 5700
F: 07 3811 6480
E: info@ecb.com.au
W: ecb.com.au
W: customalloy.com.au





UNDER HEADLIGHT

JOIN POINT A

50

CUT HERE

CUT HERE



**Lighter
Stronger
Better!**

A: 29 Snook St Clontarf QLD 4019
A: PO Box 122 Margate QLD 4019
P: 07 3897 5700
F: 07 3811 6480
E: info@ecb.com.au
W: ecb.com.au
W: customalloy.com.au





**Lighter
Stronger
Better!**

A: 29 Snook St Clontarf QLD 4019
A: PO Box 122 Margate QLD 4019
P: 07 3897 5700
F: 07 3811 6480
E: info@ecb.com.au
W: ecb.com.au
W: customalloy.com.au



DESPATCH CHECKLIST EAT255SY

Work Order #		See other side of this page for photos of all mounts
Finish:		
Transport:		
Due Date:		

- OC_____1 - Steel mounting bracket
- OC_____1 - Passengers Side underbelly guard (EAT250SY_UP3AL)
- OC_____1 - Drivers Side underbelly guard (EAT250SY_UD3AL)
- OC_____1 - Center Side underbelly guard (EAT250SY_U3AL)
- OC_____2 - ECB Overriders
- OC_____7 - 6mm airvents
- BK_____1 - Bolt Kit
- BK_____1 - Pair ECB LED Indicator / Park Lights / DRL - ICLED105ECB
- BK_____1 - Quick Click Indicator / park light Harness (IC15TOLCIPDH)
- BK_____1 - Bumper light kit
- BK_____1 - Quick Click bumper Harness (IC05D40S1004ECBH)
- BK_____1 - 2100mm length 6mm clip back trim
- BK_____2 - 550mm lengths 3mm clip back trim
- WR_____2 - ECB Overriders - FITTED TO BAR
- WR_____7 - 6mm Airvents - FITTED TO BAR
- WR_____ Steel mounting bracket - FITTED TO BAR
- WR_____ Agi Pipe must be put on the end of the bar (wings)

_____/_____
Wrapper's initials / Checker initials



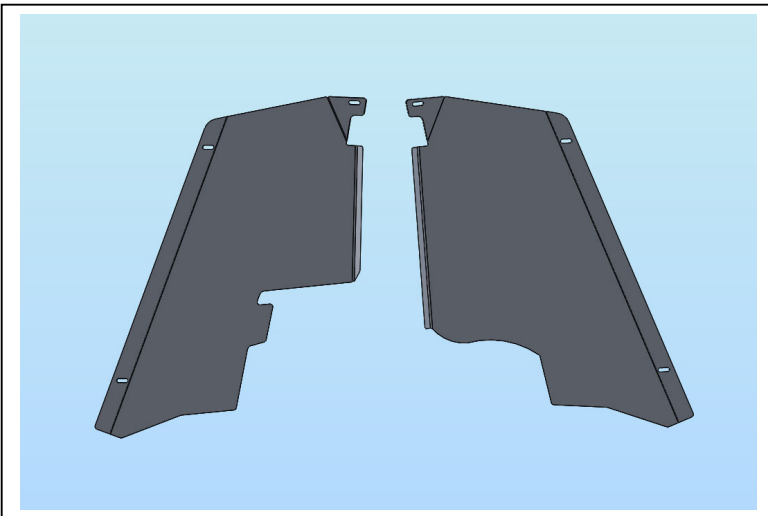
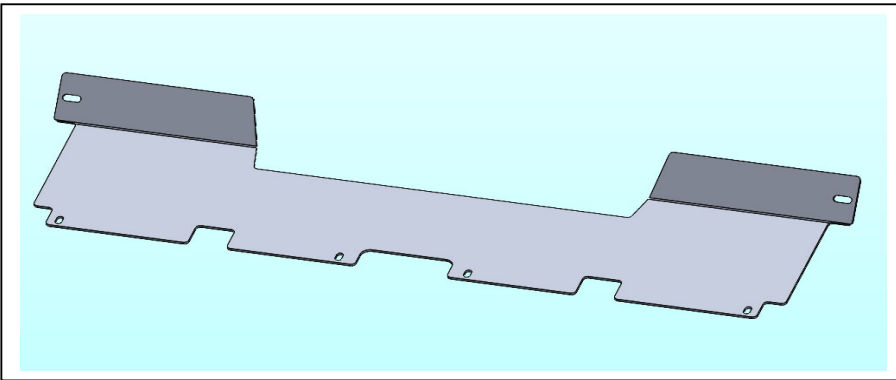
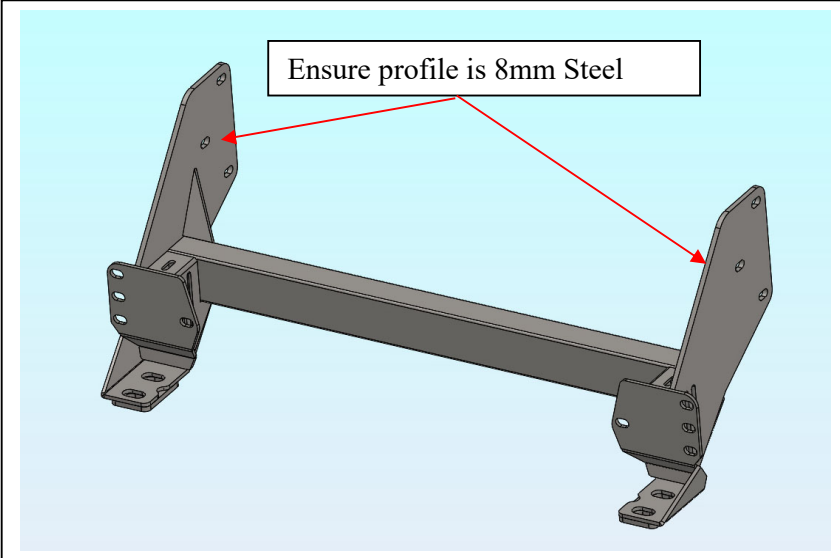
Is this product "the best it can be" Yes
If NO fix before continuing

All parts checked and completed by:

Nut and bolts: _____ Date __/__/__

Order control: _____ Date __/__/__

Final wrap check: _____ Date __/__/__



Wrapper's initials / Checker initials